

HOUSTON COUNTY SCHOOLS
MATHEMATICS DEPARTMENT

MATHEMATICS OF FINANCE
2020-2021

Houston County’s system-wide initiatives center around building fully functional, intensely focused professional learning communities in our schools.

This initiative includes a focus on learning which clarifies and monitors essential learning.

Not all content in a given grade or course is emphasized equally in the standards, nor should it be. Some clusters require greater emphasis than others based on the depth of the ideas, the time that they take to master, and/or their importance to future mathematics or the demands of college and career readiness. More time in these areas may also be necessary for students to meet the demands of the Georgia Milestones assessments.

To say that some standards have greater emphasis is **not** to say that anything in the standards can safely be neglected in instruction! Neglecting material will leave gaps in student skill and understanding and may leave students unprepared for the challenges of a later grade. This new guide not only gives calendar pacing at the unit level, but also pacing at the standard level and one of three levels of essential content, listed below.



PACING GUIDE & TEACHER PLANNER

Math teachers from every 6-12 school in Houston County were invited to meet to identify “Essential Standards.” Teachers considered the content expectations for future units within their grade, for future grades, on state assessments, and in other content areas to determine which standards were “Priority “Supporting,” or “Additional.” Their designations are color-coded within the list of standards as below and the included calendar shows approximate within-unit time allocations by standard or cluster.

Essential

Supporting

***Additional**

On SharePoint, we amended course materials (including lesson plans, study guides, assessments, and POD’s) to reflect the content of greatest emphasis for this math course because of their prioritization of standards.

This document shows where students and teachers should spend the large majority of their time in order to meet the expectations of the standards. It includes a standard-by-standard calendar for teachers to use to plan and allocate teaching/learning time appropriately.

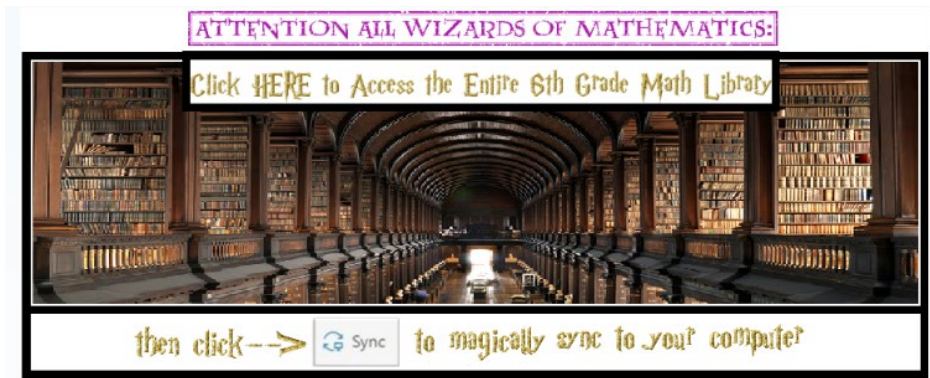
What resources are available for me?

What's on your SharePoint Course page?	<ul style="list-style-type: none">• Unit Plans• "I Can" Statements with Examples• Unit Assessments• Daily PODs• Lessons and Tasks• Assessment Banks (<i>instructions for ExamView banks after the calendars</i>)• Milestones Resources including Mock Assessments• HRW Teacher/Student Instructions• And much more
Student Weeblys	http://hcbemath.weebly.com/

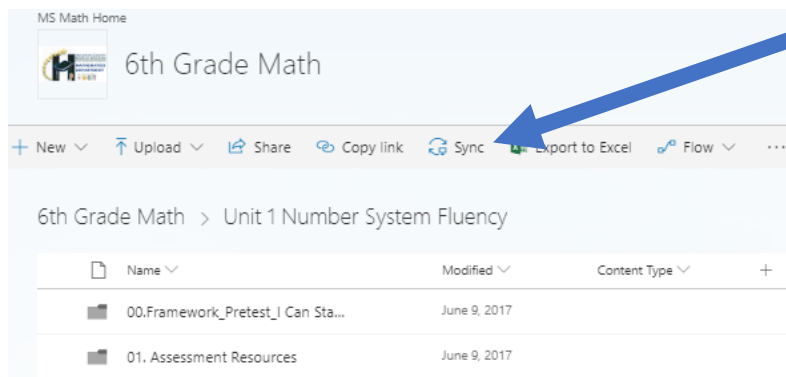
How do I sync the mathematics material to my file library on my desktop?

From Office 365, navigate to > SharePoint > Departments > Teaching & Learning > Math > Grade Band > Course Home.

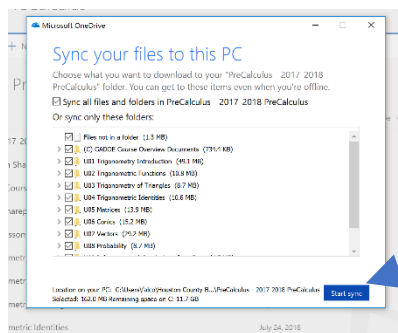
1. Navigate to your course home on SharePoint and click the icon below.



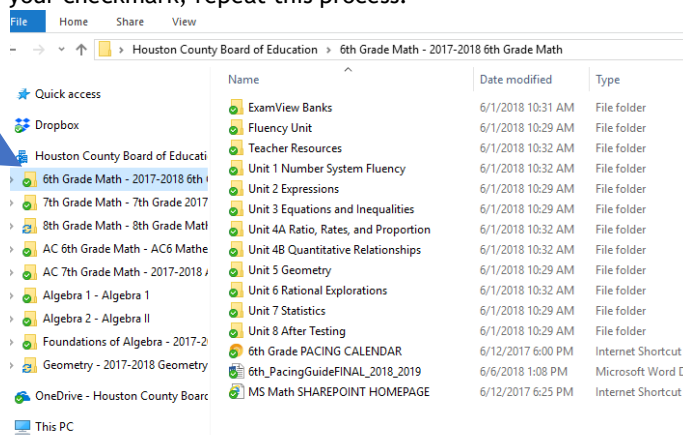
2. You are now in your course's document library. Click the Sync Button.



- A window will open and all the folders in this library should be checked. Keep them checked and choose Start sync. ***Note, you may encounter two screens before this in which you choose ALLOW and then must SIGN IN with your HCBE email.



- After a few seconds, you will get notified that the files are syncing to your Houston County BOE One Drive and the files will be located in your file library. These files work like Dropbox and are updated in real time as changes are made by Dr. Rape or Jennifer Farrow. BE SURE YOU SEE GREEN CHECK MARK. This means it is synced and your files are updated. If you open at a later date and do not see your checkmark, repeat this process.



NOTE*** These files are locked for editing and saving to these folders. You may open, edit, and save to your personal files in another file location.

NOTE**** ExamView Tests will NOT open directly from the Houston County Board of Education File Folders. To open, right-click copy and right-click save to a folder on your desktop or My Documents. Then, open the file from this location. A PDF of each test is available for you to preview

MATH OF FINANCE Unit 1 - Money Management Topics

1st Semester

August 4 - December 18

September 7 (Labor Day Holiday); October 13-16 (Fall Holiday); November 11 (Veteran's Day); November 23-27 (Thanksgiving Holiday)

MATH OF FINANCE Georgia Standards of Excellence
¹Essential

2020-2021 Pacing Guide

²Supporting

³Additional

Module 1 - Personal Finance and Money Management (≈5 weeks)

Module 1 - Money Management Topics

Lesson 1-1 Money Habits

Lesson 1-2 Goals

Lesson 1-3 Decisions

Lesson 1-4 Spending Plan

Lesson 1-5 Cash Flow

MATH OF FINANCE - UNIT 1 CALENDAR

Monday		Tuesday		Wednesday		Thursday		Friday	
Aug	3	Aug	4	Aug	5	Aug	6	Aug	7
Pre-Planning									
X									
Aug	10	Aug	11	Aug	12	Aug	13	Aug	14
MAP TEST		MAP TEST							
Not necessarily these exact dates. Ask your API for exact dates.		Not necessarily these exact dates. Ask your API for exact dates.							
Aug	17	Aug	18	Aug	19	Aug	20	Aug	21
Aug	24	Aug	25	Aug	26	Aug	27	Aug	28
Aug	31	Sept	1	Sept	2	Sept	3	Sept	4
Sept	7	Sept	8	Sept	9	Sept	10	Sept	11
Labor Day									
X									
Sept	14	Sept	15	Sept	16	Sept	17	Sept	18

MATH OF FINANCE Unit 2 – Borrowing

1st Semester

August 4 - December 18

September 7 (Labor Day Holiday); October 13-16 (Fall Holiday); November 11 (Veteran's Day); November 23-27 (Thanksgiving Holiday)

MATH OF FINANCE Georgia Standards of Excellence
^HEssential

2020-2021 Pacing Guide

^LSupporting

^{*}Additional

Module 2 - Borrowing (≈5 weeks)

Module 2 - Borrowing

Lesson 2-1 Using Credit

Lesson 2-2 Credit Costs

Lesson 2-3 Credit Rating

Lesson 2-4 Rights and Responsibilities

Lesson 2-5 Identity Fraud

MATH OF FINANCE - UNIT 2 CALENDAR

Monday		Tuesday		Wednesday		Thursday		Friday	
Sept	21	Sept	22	Sept	23	Sept	24	Sept	25
Sept	28	Sept	29	Sept	30	Oct	1	Oct	2
Oct	5	Oct	6	Oct	7	Oct	8	Oct	9
								In service	
								X	
Oct	12	Oct	13	Oct	14	Oct	15	Oct	16
FALL BREAK		FALL BREAK		FALL BREAK		FALL BREAK		FALL BREAK	
X		X		X		X		X	
Oct	19	Oct	20	Oct	21	Oct	22	Oct	23
Oct	26	Oct	27	Oct	28	Oct	29	Oct	30

MATH OF FINANCE Unit 3 – Earning Power

1st Semester

August 4 - December 18

September 7 (Labor Day Holiday); October 13-16 (Fall Holiday); November 11 (Veteran's Day); November 23-27 (Thanksgiving Holiday)

MATH OF FINANCE Georgia Standards of Excellence
¹Essential

2020-2021 Pacing Guide

²Supporting

^{*}Additional

Module 3 - Earning Power (~5 weeks)

Module 3 - Earning Power

Lesson 3-1 Invest in Yourself

Lesson 3-2 Job Benefits and Costs

Lesson 3-3 Pay and Taxes

Lesson 3-4 Lifestyle

Lesson 3-5 Plan for Change

MATH OF FINANCE - UNIT 3 CALENDAR

Monday		Tuesday		Wednesday		Thursday		Friday	
Nov	2	Nov	3	Nov	4	Nov	5	Nov	6
Nov	9	Nov	10	Nov	11	Nov	12	Nov	13
				Veterans Day					
				X					
Nov	16	Nov	17	Nov	18	Nov	19	Nov	20
Nov	23	Nov	24	Nov	25	Nov	26	Nov	27
THANKSGIVING		THANKSGIVING		THANKSGIVING		THANKSGIVING		THANKSGIVING	
X		X		X		X		X	
Nov	30	Dec	1	Dec	2	Dec	3	Dec	4
MAP TEST		MAP TEST							
Not necessarily these exact dates. Ask your API for exact dates.		Just know 2 instructional days will be taken from this month.							
Dec	7	Dec	8	Dec	9	Dec	10	Dec	11
Dec	14	Dec	15	Dec	16	Dec	17	Dec	18
								Last day of school (½ day)	

MATH OF FINANCE Unit 4 – Investing

2nd Semester

January 5 - May 26

January 18 (MLK Holiday); February 15 (President's Day Holiday); February 16 (Student Holiday) March 29-April 2 (Spring Break)

MATH OF FINANCE Georgia Standards of Excellence

2020-2021 Pacing Guide

¹Essential

²Supporting

*Additional

Module 4 - Investing (~5 weeks)

Module 4 Investing

4-1 Put Money to Work

4-2 Investing Decisions

4-3 Choosing Investments

4-4 Investment Strategy

MATH OF FINANCE - UNIT 4 CALENDAR

Monday		Tuesday		Wednesday		Thursday		Friday	
Jan	4	Jan	5	Jan	6	Jan	7	Jan	8
Inservice									
X									
Jan	11	Jan	12	Jan	13	Jan	14	Jan	15
Jan	18	Jan	19	Jan	20	Jan	21	Jan	22
MLK Holiday									
X									
Jan	25	Jan	26	Jan	27	Jan	28	Jan	29
Feb	1	Feb	2	Feb	3	Feb	4	Feb	5

MATH OF FINANCE Unit 5 – Financial Services

2nd Semester

January 5 - May 26

January 18 (MLK Holiday); February 15 (President's Day Holiday); February 16 (Student Holiday) March 29-April 2 (Spring Break)

MATH OF FINANCE Georgia Standards of Excellence

2020-2021 Pacing Guide

¹Essential

²Supporting

*Additional

Module 5 - Financial Services (~4 weeks)

Module 5 Financial Services

- 5-1 Checking Accounts
- 5-2 Financial Tools and Technology
- 5-3 Financial Fraud
- 5-4 Financial Service Providers

v

MATH OF FINANCE - UNIT 5 CALENDAR

Monday		Tuesday		Wednesday		Thursday		Friday	
Feb	8	Feb	9	Feb	10	Feb	11	Feb	12
Feb	15	Feb	16	Feb	17	Feb	18	Feb	19
President's Day		Holiday							
X		X							
Feb	22	Feb	23	Feb	24	Feb	25	Feb	26
Mar	1	Mar	2	Mar	3	Mar	4	Mar	5
Mar	8	Mar	9	Mar	10	Mar	11	Mar	12

MATH OF FINANCE Unit 6 – Insurance

2nd Semester

January 5 - May 26

January 18 (MLK Holiday); February 15 (President's Day Holiday); February 16 (Student Holiday) March 29-April 2 (Spring Break)

MATH OF FINANCE Georgia Standards of Excellence
[#]Essential

^ΣSupporting

2020-2021 Pacing Guide
*Additional

Module 6 - Insurance and Risk (~4 weeks)

Module 6 Insurance

- 6-1 Managing Risk
- 6-2 How Insurance Works
- 6-3 Selecting Insurance
- 6-4 Auto Accidents Happen

Monday		Tuesday		Wednesday		Thursday		Friday	
Mar	15	Mar	16	Mar	17	Mar	18	Mar	19
MAP Test		MAP Test							
Not necessarily these exact dates. Ask your API for exact dates.		Just know 2 instructional days will be taken from this month.							
Mar	22	Mar	23	Mar	24	Mar	25	Mar	26
Mar	29	Mar	30	Mar	31	Apr	1	Apr	2
SPRING BREAK		SPRING BREAK		SPRING BREAK		SPRING BREAK		SPRING BREAK	
X		X		X		X		X	
Apr	5	Apr	6	Apr	7	Apr	8	Apr	9
Apr	12	Apr	13	Apr	14	Apr	15	Apr	16

MATH OF FINANCE Unit 7 – Housing and Automobiles

2nd Semester

January 5 - May 26

January 18 (MLK Holiday); February 15 (President's Day Holiday); February 16 (Student Holiday) March 29-April 2 (Spring Break)

MATH OF FINANCE Georgia Standards of Excellence

2020-2021 Pacing Guide

¹Essential

²Supporting

*Additional

Module 7 - Housing and Automobiles (~6 weeks)

Module 7 Housing and Automobiles

7.1 Automobiles

7.2 Renting and Roommates

7.3 Buying a Home

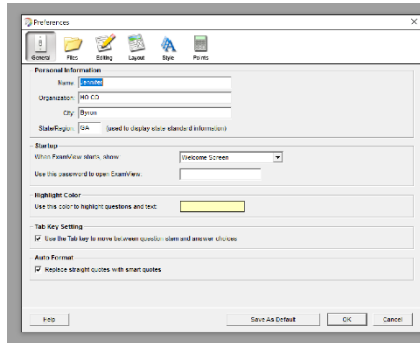
MATH OF FINANCE - Prepare for Algebra 1, Revisit Topics

Monday		Tuesday		Wednesday		Thursday		Friday	
Apr	19	Apr	20	Apr	21	Apr	22	Apr	23
Apr	26	Apr	27	Apr	28	Apr	29	Apr	30
May	3	May	4	May	5	May	6	May	7
May	10	May	11	May	12	May	13	May	14
May	17	May	18	May	19	May	20	May	21
May	24	May	25	May	26	May	27	May	28
Final Exams									

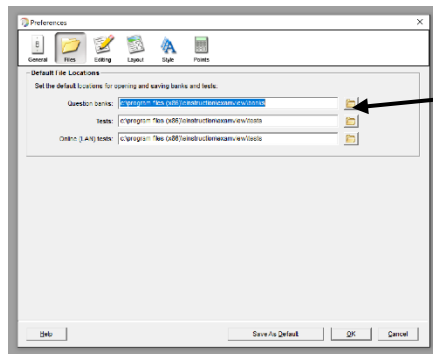
How to Make ExamView Banks Easily Accessible

Open ExamView Test Generator

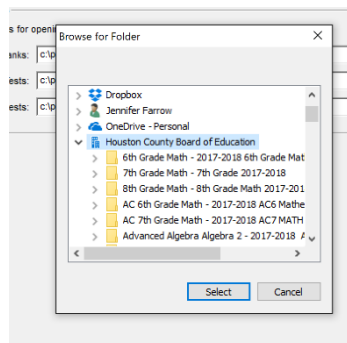
1. After closing the welcome menu, choose the EDIT tab. Select “Preferences”



2. In this window, choose “Files” and then the file folder icons next to Question banks.



3. Navigate to the location of the course materials on your computer -Houston County Board of Education Synced Files. Highlight and select. Click OK.



4. Now when you go to create a test and select questions, ExamView will default to this location. ExamView Banks are located in the ExamView folder and in each Unit’s Assessment folder.

